

称重传感器 LOAD CELL

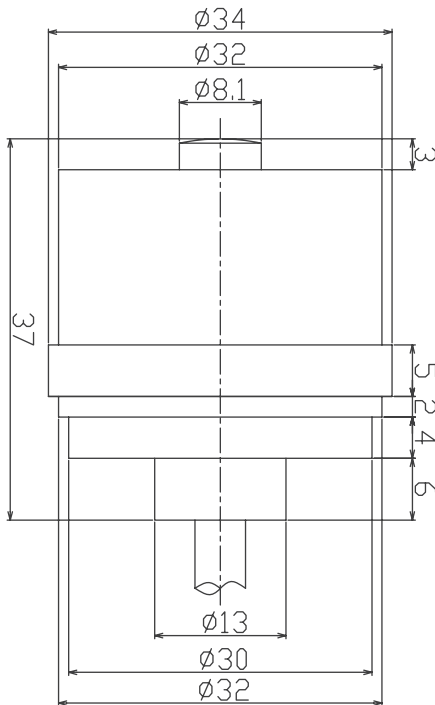
**LCD806 称重传感器**

LCD806 Load Cell

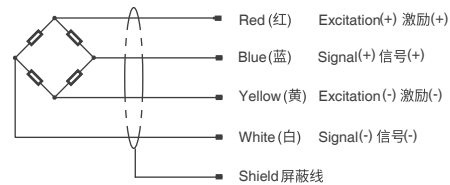


- Maximum capacity (E<sub>max</sub>) 额定载荷 (t):  
0.5, 1, 2, 3
- Be suitable for a wide range of applications including testing or weighing systems.  
适用力的控制及测量

外形尺寸 Dimensions(in mm)



接线图 Wiring code



技术参数 Specifications

|                                       |       |                     |
|---------------------------------------|-------|---------------------|
| 额定载荷 Rated Load                       | t     | 0.5, 1, 2, 3        |
| 额定输出 Rated Output                     | mV/V  | 1.0                 |
| 零点平衡 Zero Balance                     | %R.O. | ±1                  |
| 综合误差 Comprehensive Error              | %R.O. | ±0.3                |
| 蠕变 (30 分钟) Creep after 30 minutes     | %R.O. | ±0.1                |
| 推荐激励电压 Recommended excitation voltage | VDC   | 5-12 /15(max)       |
| 输入阻抗 Input impedance                  | Ω     | 350±5               |
| 输出阻抗 Output impedance                 | Ω     | 350±3               |
| 绝缘阻抗 Insulation resistance            | MΩ    | ≥5000 (50VDC)       |
| 安全过载 Safe overload                    | %R.C. | 150                 |
| 极限过载 Ultimate overload                | %R.C. | 300                 |
| 弹性元件材料 Material                       |       | Stainless Steel 不锈钢 |
| 防护等级 Degree of protection             |       | IP68                |